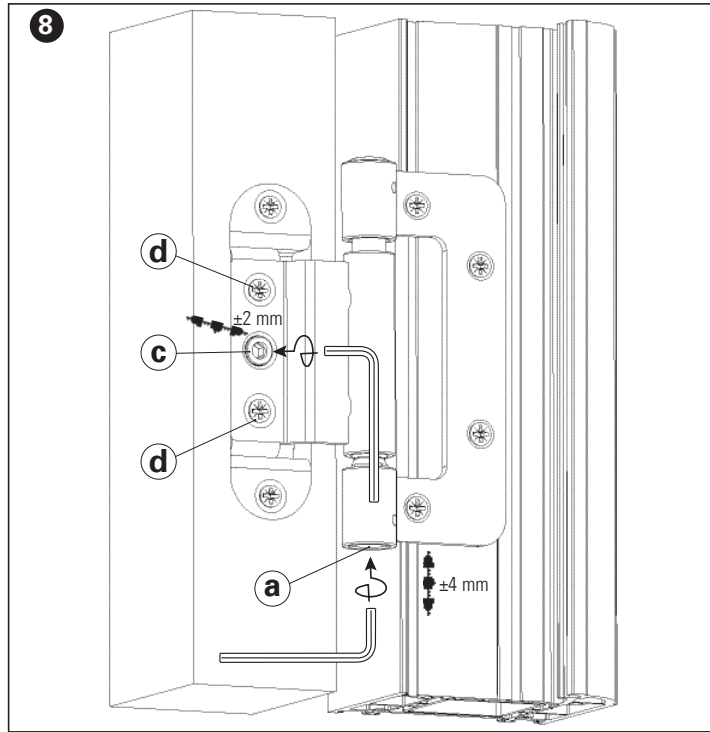


Adjustment instructions



Horizontal adjustment

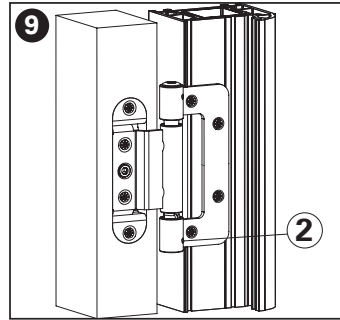
To increase the air gap between sash and frame loosen screws (d) adjust by turning screw (c) with a 4mm Allen key and tighten screws (d).

To reduce the air gap turn screw (c) and tighten screws (d).

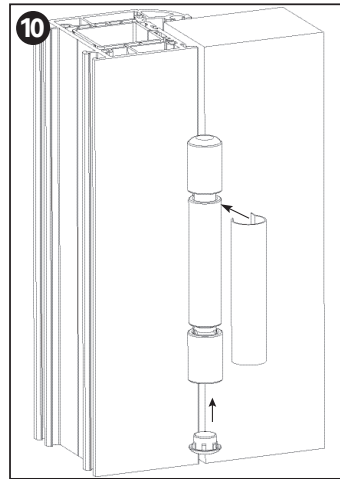
Height adjustment

Adjust by turning screw (a) with a 4mm Allen key.

Adjustment instructions



Open the door and tighten security screw (2).



Replace the lower cap and the cover cap as shown in fig. 10.

SFS intec / 153 Kirkstall Road, Leeds, LS4 2AT / uk.leeds@sfsintec.biz / www.sfsintec.biz/uk

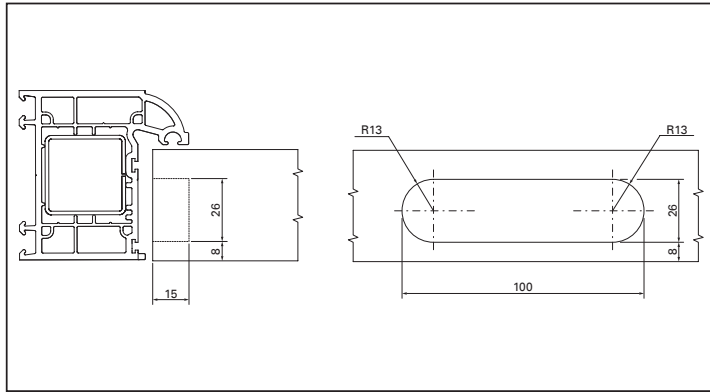
SFS intec

SFS intec

Fitting and adjustment instructions Dynamic 2D-C

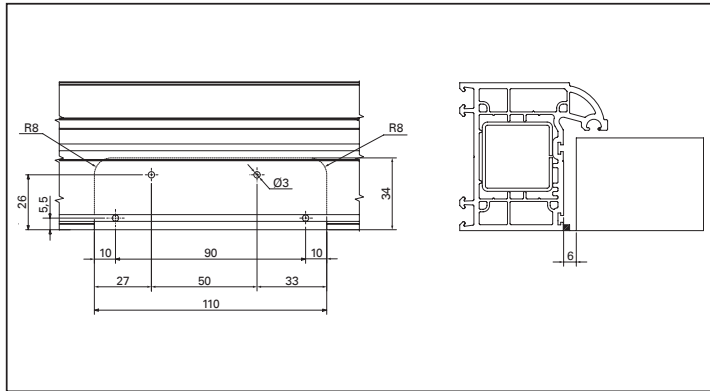


Milling diagram for sash



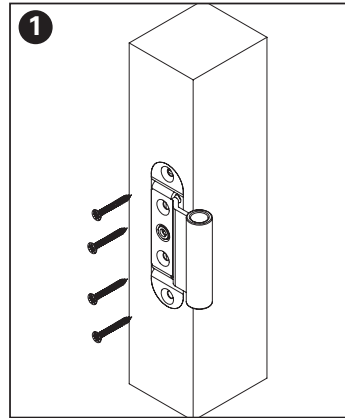
Mill in accordance to the diagram.

Milling diagram for frame

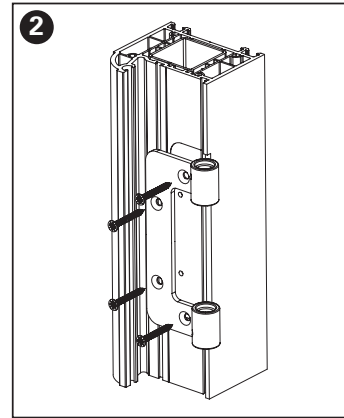


Mill and drill the frame using SFS intec jig or CNC to the dimensions shown.

Fitting instructions

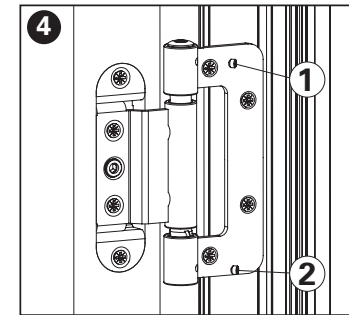


Fit in the female part in the sash and fasten with 4 screws.

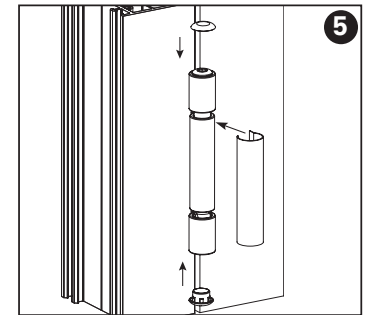


Fit in the male part in the frame and fasten with 4 screws.

Fitting instructions

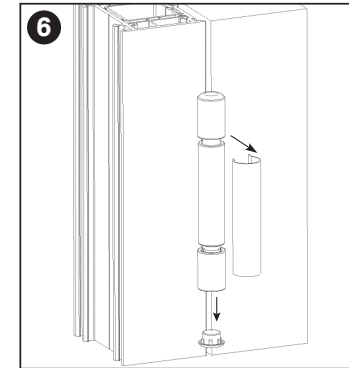


Open the door and screw in the security screws marked ① and ②.

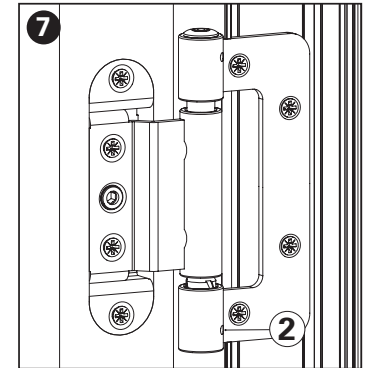


Insert caps and cover cap as shown in fig. 5.

Adjustment instructions



Remove the lower cap and the cover cap as shown in fig. 6.



Open the door and unscrew but do not fully remove the lower security screw marked ②.